



» PRODUCT BULLETIN

Avient Specialty Inks

Special Effects, Modifiers, and Additives for Screen Printers

Avient special effect inks, ink modifiers, and additives provide plastisol screen printers with an extensive solution for embellishing prints. Curated from the most popular Avient screen printing ink plastisol effects and additives, the collection includes shimmers, glitters, texture bases, soft bases; bright and clear inks, and more. Printers familiar with Avient Specialty Inks brands will note the characteristic performance on press and on garments, as all inks are purposefully formulated and carefully tested.



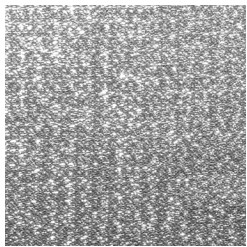
AVIENT SPECIALTY INKS



SPECIAL EFFECT RANGE

Glitters, Shimmers, and Metallic Liquid Inks

- **Glitter:** Glitters use a big flake finish to create brilliantly dazzling prints. For added impact, tint the glitters or print over a plastisol color as a base.
- **Shimmer:** Shimmers use fine detail flakes with a light ink deposit feel to produce dramatic, unique effects while maintaining excellent durability. Customize shimmers by adding plastisol colorants.
- **Metallic Liquid Silver and Gold:** Liquid gold and silver effects use a very fine leafing flake to produce an opaque, wet metallic chrome or gilded look with a smooth, soft feel.
- **Stretch White:** Low cure plastisol ink with exceptional stretch and adhesion properties. Stretch White can be used as an under base to add elasticity to prints when cotton colors are printed on top.



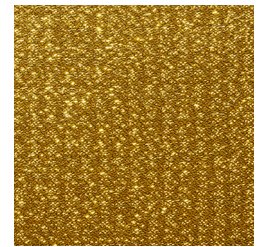
15370
Infinite FX
Silver Shimmer



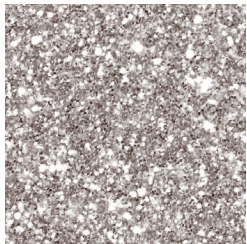
85770
Infinite FX
Brite Gold Shimmer



85570
Infinite FX
Ultra Gold Shimmer



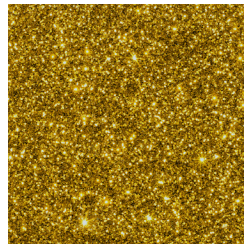
85370
Infinite FX
Pale Gold Shimmer



15330
Infinite FX
Silver Glitter



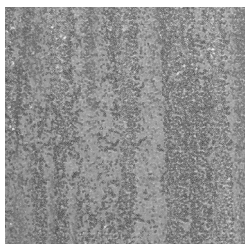
15350
Infinite FX
Crystalina



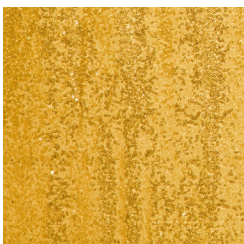
89010
Infinite FX
Rich Gold Glitter



89020
Infinite FX
Pale Gold Glitter



10988
Infinite FX
Liquid Silver



80989
Infinite FX
Liquid Rich Gold



80222
Infinite FX
Liquid Mirror Gold



80220
Infinite FX
Liquid Pale Gold



Hard Surface Textured Inks

- **Sculpture Base:** The sculpture base has a smooth finish that creates the effect of textured clay to produce high-density, stacked effects.
- **Rock Base:** The rock base creates various special effects, such as solid rock, coarse rope, or hard textured surfaces, to develop a tough and durable rock-hard ink surface.
- **Brittle Base:** The brittle base and white inks can fracture and crack easily when pressure is applied to the surface, exposing a worn, tough finish that resembles cracked paint.



Medium Surface Texture Inks

- **NuPuff Base:** This puff base produces a raised texture effect, is extremely durable, and is resistant to overblow.
- **Cork Base:** The cork base creates a high or low elevated texture that has a smooth feel but is extremely durable and stretchable.
- **HD Soft Base:** This high-density soft base produces an elevated texture that has a soft and spongy feel with excellent durability.



Soft Surface Textured Inks

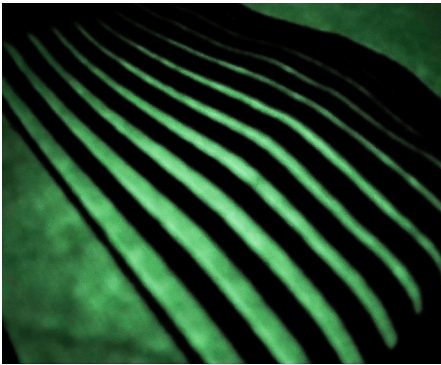
- **Natural Suede Base:** This base creates a suede/velvet finish or can be colored to create leather and felt effects.
- **Plush Base:** The plush base is specially formulated to create soft fashion textures that simulate chenille, velvet, flock, or suede.





Clear Inks

- **HD Clear 2:** This clear ink simulates glass, gel, water, or high gloss surfaces and may be used as an adhesive carrier for foil, flock, and other applications.
- **HD Sharp Clear:** This is a high-density matte clear with sharp edges.
- **Special Effects Clear:** The special effects clear ink is used as an overprint glossy clear ink and is a great accent clear for water droplets. Mix this ink with glitters or yellow sparkles for a unique look.



Reflective & Luminescents

- **Phosphorescent:** Phosphorescent inks are glow-in-the-dark inks with a light green/yellow tint.
- **Imagebrite Reflective:** Inks that reflect with different tinting options for added color.
- **Luna Clear:** Print secret messages visible only under blacklight with Luna Clear ink.



Additives

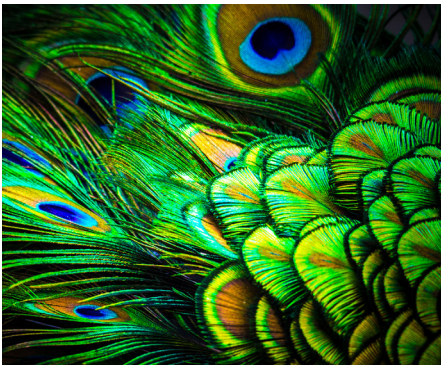
- **Foil Resist Additive:** This additive can be added to plastisol inks to resist foil adhesion.
- **Suede Additive:** This multi-purpose additive dulls glossy inks or adds a suede-like finish to plastisol inks.





Adhesives

- **Flock Adhesive Base:** A specially formulated base to adhere flock fibers onto textile surfaces.
- **Foil Adhesive:** A press-ready plastisol ink ideal for flock, heat transfer flock, foils, and other media
- **Particle Base:** This is a crystal-clear ink created for use with poly-flake glitter and other particles.
- **Nova Base:** Nova base penetrates substrates, leaving the glitter flake exposed and dry for a dry glitter effect. Print this base over an ink underlay to produce gloss embossed effects.



4-PROCESS COLOR INKS

Infinite FX Process colors produce clean, high-intensity colors for textile printing. These pure, transparent colors are created for high-productivity direct wet-on-wet printing and provide excellent resistance to build-up, superb printability, an extremely soft hand, and minimal dot gain.



SPECIALTY INK RANGE

Avient Specialty Inks' special effects, modifiers, and additives have also been tested and proven to work with any Avient plastisol screen printing ink brand. This gives printers expanded access to inspired inks designed to differentiate prints from the competition.



Material #	Material Description	Material #	Material Description	Material #	Material Description
Special Effects		Special Effects		Clears	
FO20047984	15370 Infinite FX Silver Shimmer	FO20048039	K2564 Infinte FX Nova Base	FO20048057	K2430 Infinite FX SE Gel Clear
FO20047985	85770 Infinite FX Brite Gold Shimmer	FO20048041	K2566 Infinite FX Flocking Adhesive	FO20048097	K2440 Infinite FX HD Clear 2
FO20047986	85570 Infinite FX Ultra Gold Shimmer	FO20048042	K2570 Infinite FX Nupuff Base	FO20048098	K2450 Infinite FX Super Gel Clear
FO20047987	85370 Infinite FX Pale Gold Shimmer	FO20048119	11000 Infinite FX Nupuff White	FO20048084	K2460 Infinite FX Sharp Clear
FO20047992	15330 Infinite FX Silver Glitter	FO20048105	19000 Infinite FX Nupuff Black	FO20048086	K2470 Infinite FX Thermo-Line Clear
FO20048000	15350 Infinite FX Crystalina	FO20048044	K2572 Infinte FX Cork Base	Mixing Bases	
FO20047993	89010 Infinite FX Rich Gold Glitter	FO20048045	K2574 Infinite FX HD Soft Base	FO20048128	K2922 Soft Hand Clear
FO20047995	89020 Infinite FX Pale Gold Glitter	FO20048126	11000 Infinite FX HD Soft White	Additives	
FO20048033	10988 Infinite FX Liquid Silver	FO20048125	19000 Infinite FX HD Soft Black	FO20048107	K2910 Viscosity Buster
FO20048035	80989 Infinite FX Liquid Rich Gold	FO20048050	K2580 Infinite FX Sculpture Base	FO20048108	K2912 Viscosity Buster LC
FO20048036	80222 Infinite FX Liquid Mirror Gold	FO20048065	K2582 Infinite FX Brittle Base	FO20048109	K2915 Curable Reducer
FO20048124	80220 Infinite FX Liquid Pale Gold	FO20048122	11000 Infinite FX Brittle White	FO20048110	K2920 Finesse
FO20047990	K2530 Infinite FX Shimmer Base	FO20048066	K2584 Infinite FX Rock Base	FO20048106	K2924 Tack Free Additive
FO20048002	K2535 Infinite FX Particle Base	FO20049055	11000 Infinite FX Stretch White	FO20048135	K2926 Flash Additive
FO20048078	K2540 Infinite FX Imagebrite Base	4-Color Process Inks		FO20048111	K2930 Dulling Additive
FO20048079	K2542 Infinite FX Imagebrite Lite Gray	FO20049022	K2640 Infinite FX Process Black	FO20048112	K2932 Emboss Additive
FO20048085	K2544 Infinite FX Imagebrite Platinum	FO20049030	K2620 Infinite FX Process Magenta	FO20048129	K2940 Hugger Catalyst
FO20048075	K2550 Infinite FX Glow-In-Dark	FO20049029	K2610 Infinite FX Process Cyan	FO20048113	K2942 Thickener #2 Powder
FO20048077	K2554 Infinite FX Intense Kosmic Glow	FO20049033	K2630 Infinite FX Process Yellow	FO20048114	K2944 Thickener #3 Liquid
FO20048123	K2558 Infinite FX Luna Clear	FO20049023	K2585 Infinite FX Halftone Base	FO20048117	K2980 Foil Resist Additive
FO20048037	K2560 Infinte FX Suede Base			FO20048118	K2982 Flexipuff Additive
FO20048038	K2562 Infinte FX Plush Base			FO20048891	K2984 Infinite FX Foil Adhesive
				FO20048871	K2983 Suede Additive

**For more information, visit
avientspecialtyinks.com**

**1.844.4AVIENT
www.avient.com**



Copyright © 2024, Avient Corporation. Avient makes no representations, guarantees, or warranties of any kind with respect to the information contained in this document about its accuracy, suitability for particular applications, or the results obtained or obtainable using the information. Some of the information arises from laboratory work with small-scale equipment which may not provide a reliable indication of performance or properties obtained or obtainable on larger-scale equipment. Values reported as "typical" or stated without a range do not state minimum or maximum properties; consult your sales representative for property ranges and min/max specifications. Processing conditions can cause material properties to shift from the values stated in the information. Avient makes no warranties or guarantees respecting suitability of either Avient's products or the information for your process or end-use application. You have the responsibility to conduct full-scale end-product performance testing to determine suitability in your application, and you assume all risk and liability arising from your use of the information and/or use or handling of any product. AVIENT MAKES NO WARRANTIES, EXPRESS OR IMPLIED, INCLUDING, BUT NOT LIMITED TO, IMPLIED WARRANTIES OF MERCHANTABILITY AND FITNESS FOR A PARTICULAR PURPOSE, either with respect to the information or products reflected by the information. This literature shall NOT operate as permission, recommendation, or inducement to practice any patented invention without permission of the patent owner.