

» APPLICATION BULLETIN

## Zodiac<sup>™</sup> Aquarius<sup>™</sup> Transfer Inks

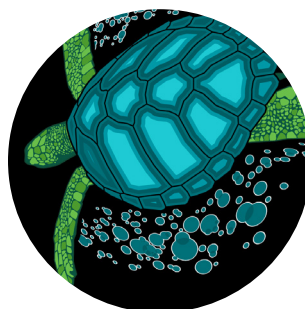
The Zodiac<sup>™</sup> Aquarius<sup>™</sup> Transfer Ink range is an innovative water-based high-solids chemistry designed to produce single and multi-colored heat transfers. As with other inks in the Aquarius portfolio, the transfer inks comply with the Zodiac brand restricted substance list (RSL). This list outlines the maximum level of a substance used in Zodiac product formulations.

The range comprises four key products: a neutral base, a white ink, migration stop, and a printable adhesive.

### KEY CHARACTERISTICS

- Excellent elasticity, can be used on high stretch fabrics
- Suitable for use on manual or automatic presses
- Extended screen open time
- Excellent wash durability & crock
- Water-based, non-PVC, and non-phthalate
- Compliant with the Zodiac RSL

PRODUCT	DESCRIPTION
Zodiac Aquarius Transfer White	Ready-to-use white ink with excellent opacity, elasticity, and soft hand.
Zodiac Aquarius Transfer Base	Neutral base with excellent elasticity, soft hand, high wash durability, and exceptional screen performance. To add color, this base can be pigmented with the universal Zodiac Aquarius pigments.
Zodiac Aquarius Transfer Migration Stop	Dye blocker developed to prevent dye bleeding into heat transfer prints applied to textile fabrics where dye migration is a concern.
Zodiac Aquarius Transfer Printable Adhesive	Printable adhesive that can be used alone or with the traditional transfer powder.
Zodiac Aquarius Universal Additive	Aquarius Universal Additive is used to combat pinholing, which can occur during printing, and can also reduce bubbling, which can develop during the mixing process.



For best performance on press and on the garment, print Zodiac Aquarius Transfer inks using the following application and recommendation guidelines:

## APPLICATION

1. Add 3% of Aquarius Transfer Fixer EU to all layers of colors, Transfer White, and Transfer Migration Stop.
2. Cure all printed sheets at 284°F (140°C) for 60 to 90 seconds.
3. A 1% addition of Aquarius Universal Additive improves the flow of Aquarius Transfer inks when printing on film and reduces the risks of pinholing.
4. The finished transfers can be applied to the requested substrate on a heat press at 329°F (165°C) for 12 seconds with 5 bar pressure.

## RECOMMENDATIONS

- For maximum adhesion and wash resistance, print Zodiac Aquarius Transfer Printable Adhesive and then scatter coat with an adhesive powder.
- Polyester film is the recommended carrier for Aquarius Transfers due to its dimensional stability and ease of placement.
- The ink film should be entirely dry between prints, otherwise intercoat adhesion failure is likely.
- Zodiac Aquarius Transfer White can also be used as a backer for digitally printed transfer systems.
- Do not exceed the recommend Zodiac Aquarius Transfer Fixer load.

Application information and recommendations are based on our experience and know-how. Results can vary for each user depending on their conditions of use. Be sure to appropriately test these products for your use needs.

The following starter kit KT90000575KT is available for product testing. The kit includes five Zodiac Aquarius Transfer inks, as well as four pigments to help printers begin using transfer inks.

DESCRIPTION	QUANTITY
Aquarius Transfer Base	5 KG
Aquarius Transfer White	5 KG
Aquarius Transfer Migration Stop	5 KG
Aquarius Transfer Printable Adhesive	5 KG
Aquarius Black PC	1 KG
Aquarius Blue G PC	1 KG
Aquarius Red B PC	1 KG
Aquarius Yellow G PC	1 KG
Aquarius Universal Additive	1 KG
Aquarius Transfer Fixer EU	1 KG

[www.zodiacinks.com](http://www.zodiacinks.com)



Copyright © 2023, Avient Corporation. Avient makes no representations, guarantees, or warranties of any kind with respect to the information contained in this document about its accuracy, suitability for particular applications, or the results obtained or obtainable using the information. Some of the information arises from laboratory work with small-scale equipment which may not provide a reliable indication of performance or properties obtained or obtainable on larger-scale equipment. Values reported as “typical” or stated without a range do not state minimum or maximum properties; consult your sales representative for property ranges and min/max specifications. Processing conditions can cause material properties to shift from the values stated in the information. Avient makes no warranties or guarantees respecting suitability of either Avient’s products or the information for your process or end-use application. You have the responsibility to conduct full-scale end-product performance testing to determine suitability in your application, and you assume all risk and liability arising from your use of the information and/or use or handling of any product. AVIENT MAKES NO WARRANTIES, EXPRESS OR IMPLIED, INCLUDING, BUT NOT LIMITED TO, IMPLIED WARRANTIES OF MERCHANTABILITY AND FITNESS FOR A PARTICULAR PURPOSE, either with respect to the information or products reflected by the information. This literature shall NOT operate as permission, recommendation, or inducement to practice any patented invention without permission of the patent owner.