

## The template is broken up into four layers

1. The first layer contains the instructions only.
2. The second layer contains a mask (currently masking a blue circle). Unmask and delete the circle. Then use the mask for the first of your two images. This image will be seen when viewed from the wearer's left.
3. The third layer contains an adjacent but identical mask (currently masking an orange circle). Unmask and delete the circle. Then use the mask for the second of your two images. This image will be seen when viewed from the wearer's right.
4. The fourth layer contains the lines representing the hd bars that divide the images. You will need to include these bars in your separation to use for whatever HD product you choose to print to create the lenticular effect.

\* Note: You can create a mask in a shape that compliments your design (as seen in the example below) to avoid printing a rectangle of bars.

## WILFLEX™ ORIGINALS EXAMPLE

IMAGE 1

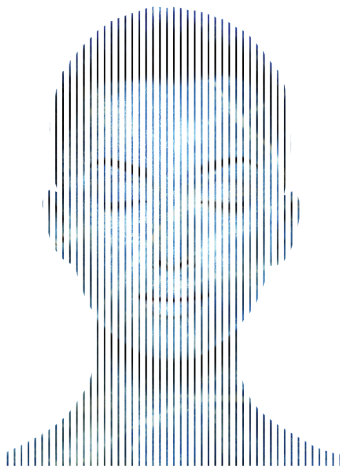


IMAGE 2

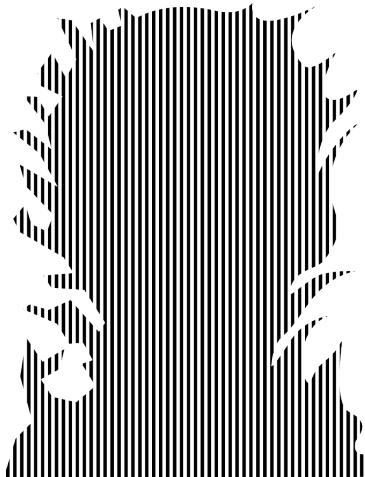
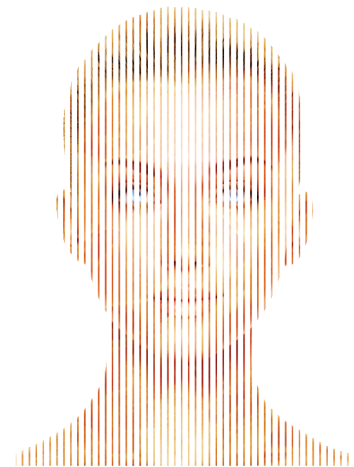
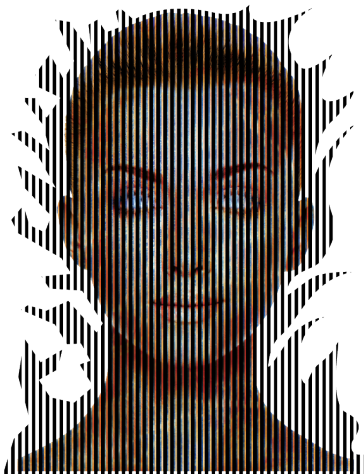


IMAGE 3



COMPOSITE



### PHOTOSHOP® SEPARATION NOTES

Export the unmasked images along with the masks as separate layers from Adobe® Illustrator® into Adobe® Photoshop®. This will allow you to separate using the entirety of the image(s).

Once your separation is complete you can then select the inverse of the masked layers and delete the portions of the image you do not need.

It is strongly recommended that you save a version of the file prior to deleting the excess imagery in case you have to edit the separation at a later date.

**Second layer of Illustrator® file  
Mask for Image 1**

Third layer of Illustrator® file  
Mask for Image 2

Fourth layer of Illustrator® file  
HD bars

